

BenchMark® HD

Heavy Duty Bench Scale

Specifications

Load Cell, NTEP Certified:

IP67 aluminum, environmentally sealed

Output Impedance:

350 ohm

Maximum Overload:

200%

Overload Protection:

Five-point, independently adjusted

Cable Length:

10 ft (3 m)

Compensated Temperature Range:

14° F to 104° F (-10° C to 40° C)

Warranty:

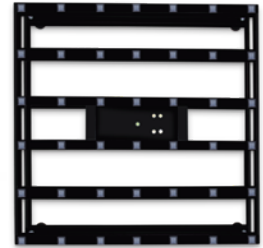
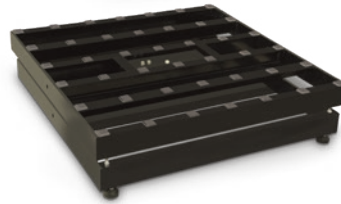
Two-year limited warranty

Approvals:

NTEP CC 06-010, Class III 5,000 d

Measurement Canada AM-5625, Class III 5,000 d

Load cell is cFMus



Standard Features

- Heavy-duty designed mild steel base construction with 304 stainless steel cover
- Polyurethane rubber leveling feet with stainless steel stems

APPROVALS



Part Number/Price

Part #	Capacity	Platform Dimensions (L x W x H)	Est. Weight	Price
93414	250 lb (125 kg)	30 x 30 x 8.75 in	300 lb	Consult
93415	500 lb (225 kg)	30 x 30 x 8.75 in	300 lb	Consult
93416	250 lb (125 kg)	36 x 36 x 8.75 in	330 lb	Consult
93417	500 lb (225 kg)	36 x 36 x 8.75 in	330 lb	Consult

Consult factory for modifications for airport baggage scales.

